

MENWINNION
COUNTRY HOUSE



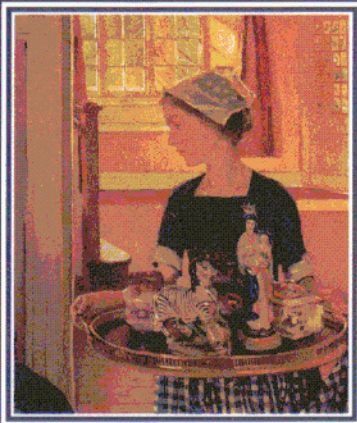
MENWINNION

A BRIEF HISTORY

Menwinnion was built in 1912 as a wedding present for the artist Frank Heath and his wife Jessica. It was Jessica's father who paid for the building of the house having purchased 10 acres of land from a local landowner, Colonel Paynter. He instructed a local architect, Mr. Stacey to draw up plans for the house which was completed one year later in 1913 for the princely sum of £1000 and named Menwinnion - 'House of the Winds'. Some of the stone used in the construction of the house was hand drilled out of the ground on the site and then split and shaped into blocks.



Menwinnion c.1930



'The Little Maid' by Frank Heath
Nancy, Frank Heath's second daughter
in the hall at Menwinnion.

The design and landscaping of the gardens presented a major challenge. Cornish stone walls were constructed and privet and escallonia hedges planted as windbreaks. From the holes made by the excavation of the granite, several 'courts' were created and named, 'Lavender', 'May' and 'Wood'; below these courts a pond was also dug out. A gardener, Thomas was hired to maintain the gardens and two maids were employed within the house.

Frank & Jessica Heath and their children lived at Menwinnion for 23 years until Frank Heath's death in 1936. Jessica then sold the house to Mr. Williams, a solicitor from Penzance; on his death the house passed to his brother, the Cornish author 'Elephant Bill' Williams. Subsequently the house became a hotel and passed through a number of owners before being converted to a retirement home.

Frank Heath was a second generation member of the renowned 'Newlyn School' whose members included among others, Stanhope Forbes, Lamorna Birch, Dame Laura Knight, and her husband Harold, Sir Alfred Munnings and Charles Simpson. Between 1903 to 1935 Frank Heath exhibited many of his pictures at the Royal Academy and at the Salon in Paris. The examples shown here are typical of his work and bear testimony to the continuing popularity of the painters who lived and worked in this area.

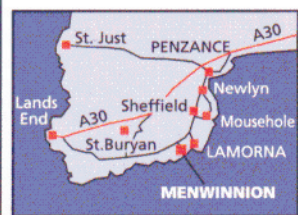


'Last Day of the Holidays' by Frank Heath.
Frank Heath's three daughters, Aileen, Nancy and Gabriel at Lamorna Cove.
Photographs of the paintings by Frank Heath, by courtesy of Hugh Bedford,
from his book *Frank Gascoigne Heath and his 'Newlyn School' Friends at Lamorna.*



LOCATION

Directions from Penzance:
Turn left at British Rail Station and continue along waterfront to Newlyn. Continue straight along the B3315 road marked to Lamorna and Porthcurno - up steep hill - through village of Sheffield, before passing the turning marked to Lamorna. At the top of the hill turn left at sign for Menwinnion. The approximate distance from Penzance to Menwinnion is five miles.





MENWINNION
COUNTRY HOUSE

LAMORNA VALLEY · PENZANCE · CORNWALL TR19 6BJ